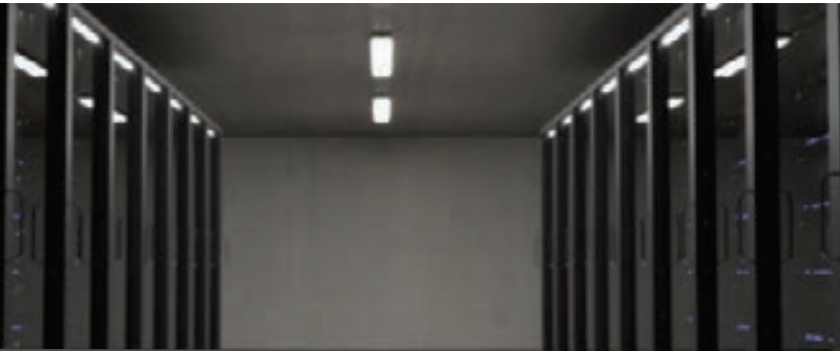




PCITECHNOLOGYSERVICES.COM

CAGE: 8QVN1  
DUNS: 117551025  
NAICS: 541511, 541512,  
541519, 541611, 541618



**Mal McGhee**

CEO

251.368.0818

mmcgee@pcifs.com

## Capabilities Statement

### Corporate Overview

PCI Technology Services LLC is a tribally-owned company. We provide enterprise IT, cybersecurity, data analytics, DevSecOps, and systems engineering services in support of US Federal Agencies and the Department of Defense. PCI Technology Services is a member company of PCI Federal Services (<https://www.pcifederaleservices.com>) which was formed under the Poarch Band of Creek Indians Tribe to provide high quality products and services to Federal customers. As one of seven current member LLCs under our parent holding company, we have the ability to draw from a wide array of technical and programmatic expertise across multiple Key Business Areas (KBAs) to satisfy client requirements.

### Key Business Areas



Enterprise IT

- Public Cloud, Gov Cloud, Private Cloud
- IaaS, PaaS, SaaS
- Enterprise Architecture
- Governance, Risk, Compliance
- Service Desk/Help Desk
- Systems Administration
- Field Support Services
- Internet of Things



Cybersecurity

- Cyber Compliance
- Cyber Analytics
- Cybersecurity Operations
- Intelligence and Threat Assessment
- Infrastructure Protection
- Security Operations Center



Data Analytics

- Data Strategy
- Data Architecture
- Machine Learning and Artificial Intelligence



DevSecOps

- Agile Development
- Continuous Integration and Delivery
- Automatic Provisioning and Configuration Management
- Platform Engineering
- Integrated Security



Systems Engineering

- Systems Integration
- Scaled Agile Framework (SAFe®)
- Model-Based Systems Engineering
- Mission Analysis

### Clients Supported



Department of Transportation



NRO



Department of the Treasury



Department of Health



IRS



General Services Administration



FEMA



U.S. Navy

a wholly-owned subsidiary of Poarch  
Creek Indian Federal Services  
[pcifederaleservices.com](http://pcifederaleservices.com)



# TRIBAL 8(a) SOLE SOURCE PROCESS

